

FEATURES

- High Power Dissipation up to 13W @25°C
- Specially Designed to meet Repetitive Pulse Loading
- Corrosion Resistant Terminals for long life
- Superior Vibration Resistance
- IEC 115-1 Reference Standard

SPECIFICATIONS

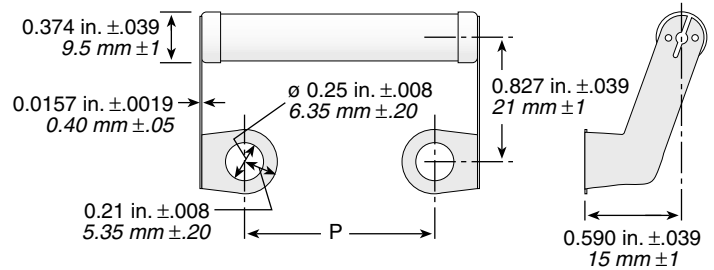
Temperature Range: -55°C to 200°C
Terminal Strength: >25N
Derating: 25°C to 350°C, Linearly
TCR: ±100 ppm/°C
Tolerance: 1%, ±2%, ±5%, ±10%

ENVIRONMENTAL TEST DATA

Endurance at Rated Temperature	Full Rated Power for 1000hrs, (1.5hrs ON, 0.5hrs OFF) at 25°C	$\Delta R < 5\% + 0R05$
Short Term Overload	10 x Rated Power for 5 secs, IEC115-1, Clause 4.1.3	$\Delta R < 2\% + 0R05$
Damp Heat Steady State	90-95% RH, 40°C, 56 Days, IEC 115-1, Clause 4.17.3	$\Delta R < 5\% + 0R05$
Climatic Sequence	As per IEC 115-1, Clause 4.23	$\Delta R < 5\% + 0R05$
Solderability	Not Applicable-Resistor is Designed for Screw Mounting Only	
Terminal Strength	25 N Pull Test for 10 Seconds, IEC 115-1, Clause 4.16	$\Delta R < 0.5\% + 0R05$

G Series

Capacitor Discharge & Symmetry Resistors



Series	Wattage @25°C	Wattage @70°C	Limiting Voltage	Critical Value	Ohmic Range	Length P (in. ±0.039 / mm±1)
GW10	10	8.5	685	47KΩ	1Ω-82K	0.866 / 22.0
GW13	13	11	940	68KΩ	1Ω-120k	1.252 / 31.8

ORDERING INFORMATION

G Series — **GW10J5K00E** — E = RoHS compliant

Component Modifier	Wattage	Tolerance	Resistance Value	Examples:
W = wirewound	10 watts 13 watts	K = 10% J = 5% G = 2% F = 1%	R = Decimal K = 1,000	1K00 = 1,000Ω 10K0 = 10,000Ω 82K0 = 82,000Ω 120K = 120,000Ω

STANDARD PART NUMBERS

Ohms	10 watt	13 watt
1K	GW10J1K00E	GW13J1K00E
2.5K	GW10J2K50E	GW13J2K50E
5K	GW10J5K00E	GW13J5K00E
7.5K	GW10J7K50E	GW13J7K50E
10K	GW10J10K0E	GW13J10K0E
15K	GW10J15K0E	GW13J15K0E
20K	GW10J20K0E	GW13J20K0E
25K	GW10J25K0E	GW13J25K0E
40K	GW10J40K0E	GW13J40K0E
50K	GW10J50K0E	GW13J50K0E
75K	GW10J75K0E	GW13J75K0E